



Department
of Health &
Social Care

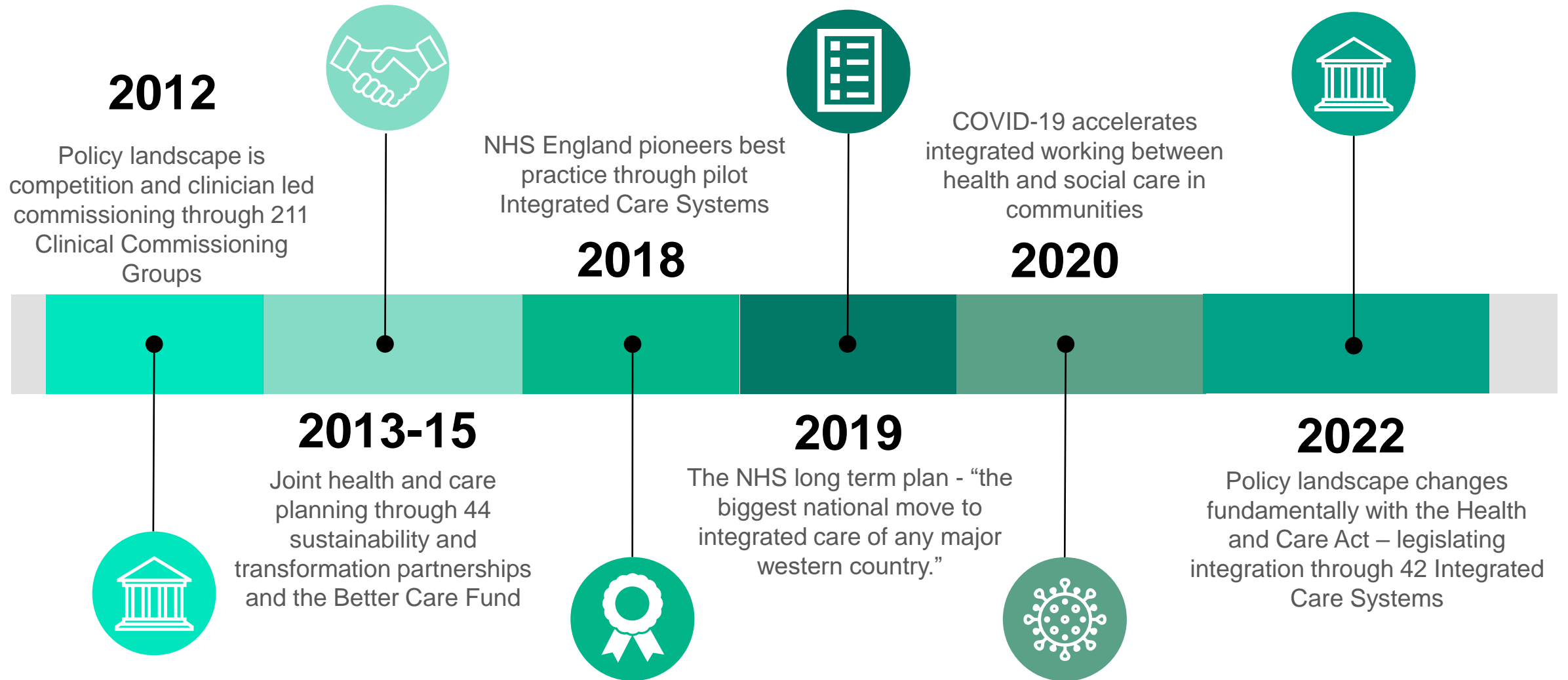
Integrated Care Systems in England

Sam Boyd, Deputy Director System Delivery

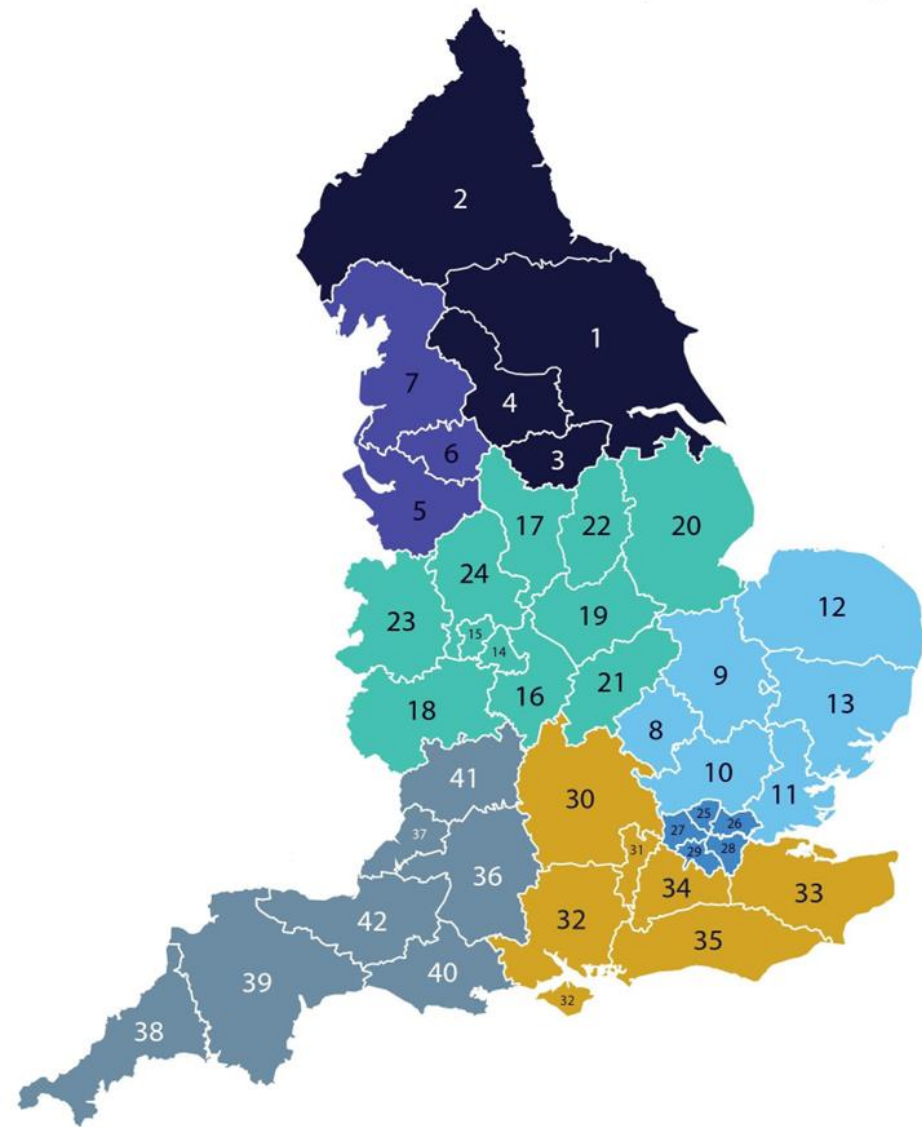
Department of Health and Social Care

November 2023

Policy journey to Integrated Care Systems (ICS)



ICS Structure



 **Department of Health and Social Care**

NHS England:
Oversight of the ICB and NHS providers

Care Quality Commission
Reviews and assesses the Integrated Care System

Statutory Integrated Care System

Integrated Care Board (ICB)

Membership

- A Local Authority
- Primary Care
- Hospital Trusts
- Mental Health Lead
- Chief Executive Officer

Role
Allocate the NHS health budget and commission services to meet the health needs of the population. Accountable to NHS England.

Joint Forward Plan
How Health services will deliver Integrated Care Strategy

Integrated Care Partnership (ICP)




Membership

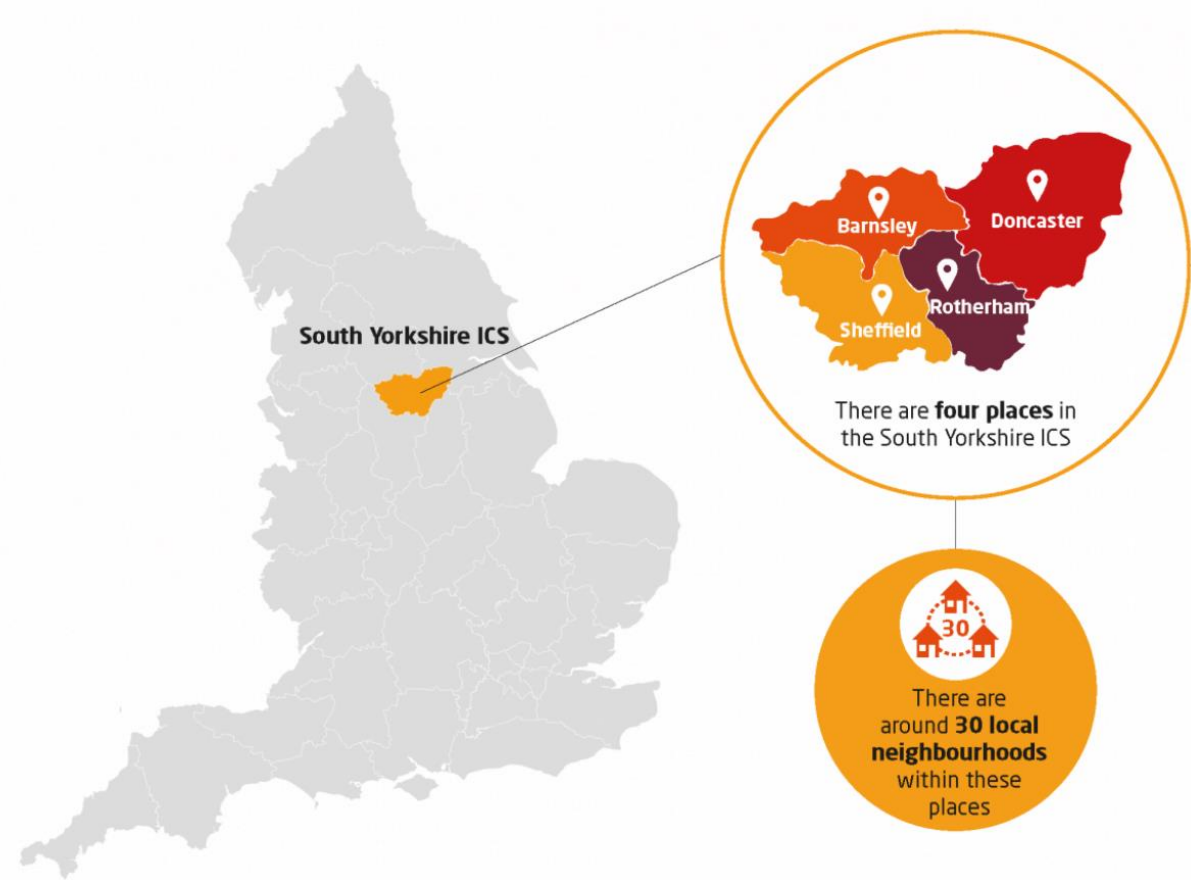
- Healthwatch – Citizen engagement
- All Local Authorities
- Voluntary and community sector
- Social care providers
- Education and employment & housing

Role
Bring together a range of partners across the wider determinants of health. Develop an Integrated Care Strategy.

Integrated Care Strategy
Addressing the wider health and social care needs of the population

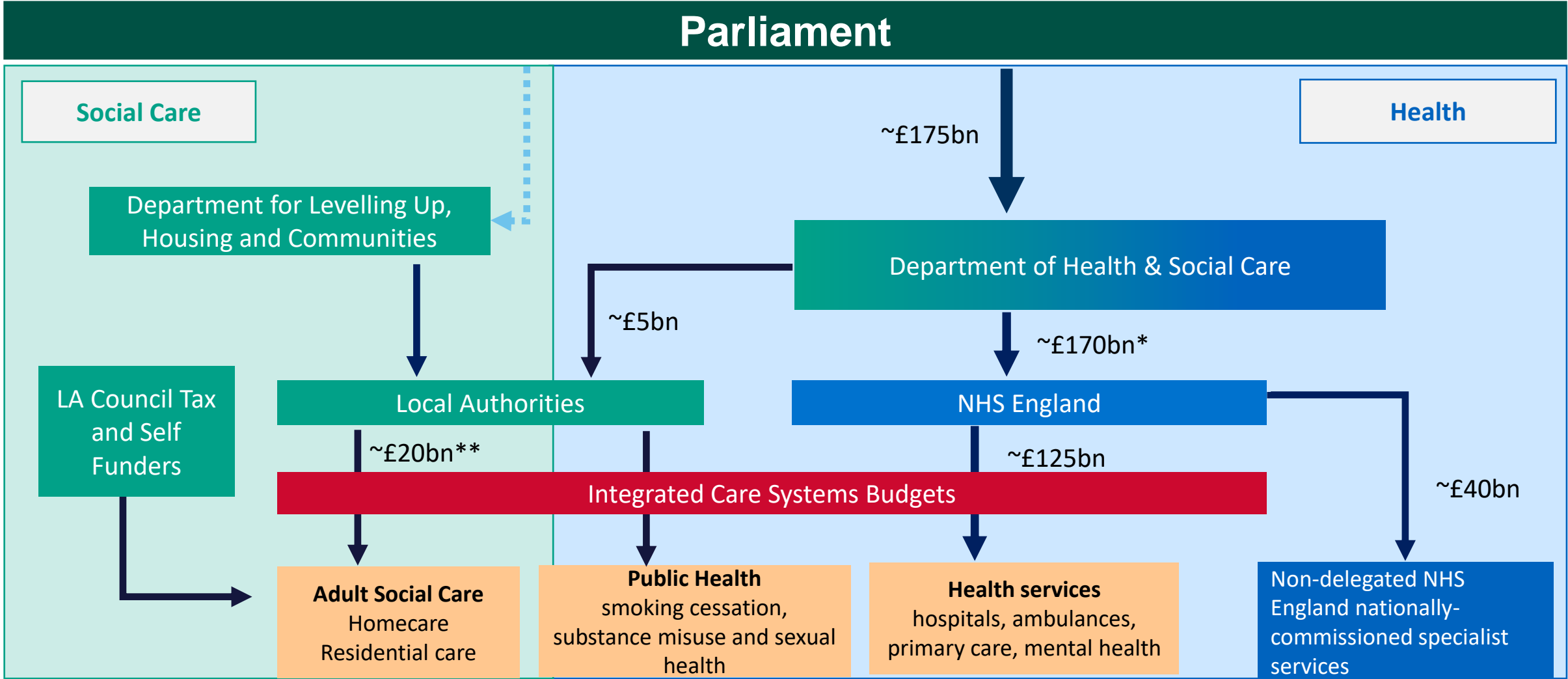
System, Place and Neighbourhoods

<p>42 ICS 1-2 million people</p> 	<ul style="list-style-type: none"> Partners come together at scale to set the system strategy Manage resources and performance Drive strategic improvement
<p>184 Places 250,000-500,000 people</p> 	<ul style="list-style-type: none"> Largely mapped to local authority boundaries Partnerships of health and care organisations join up the delivery of services Redesign care pathways Engage with local communities and address health inequalities
<p>1250 Neighbourhoods (Primary Care Networks) 30-50,000 people</p> 	<ul style="list-style-type: none"> Groups of GP Practices work with community, social care, local voluntary sector services, mental health More coordinated and proactive care



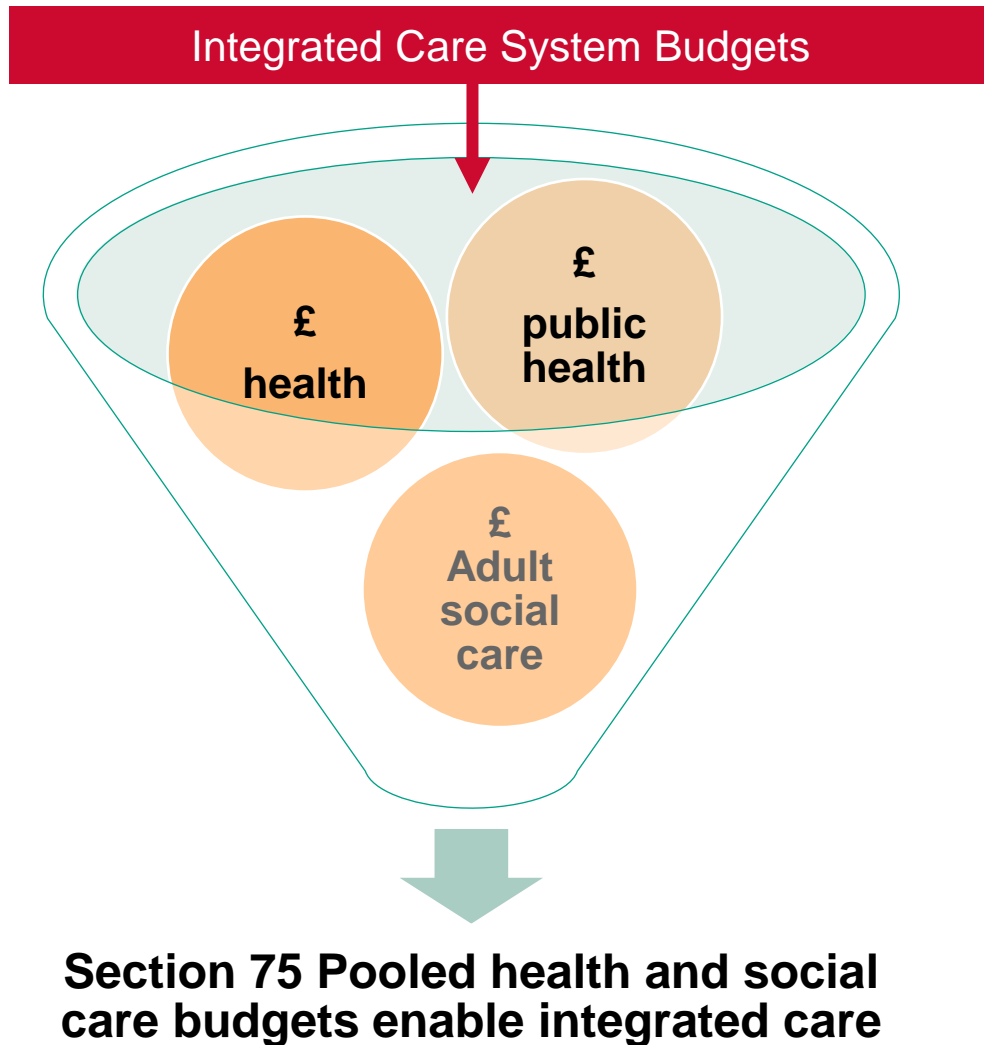
[Integrated care systems explained | The King's Fund \(kingsfund.org.uk\)](https://www.kingsfund.org.uk/integrated-care-systems-explained)

How are Integrated Care Systems Funded?



*as per NHS financial directions
 **based on 21/22 data (latest available) and will be dependent on LA discretion over ASC precept
 ***(Financial year 2023-24, figures are approximate)

Pooling budgets and new procurement rules can support integration

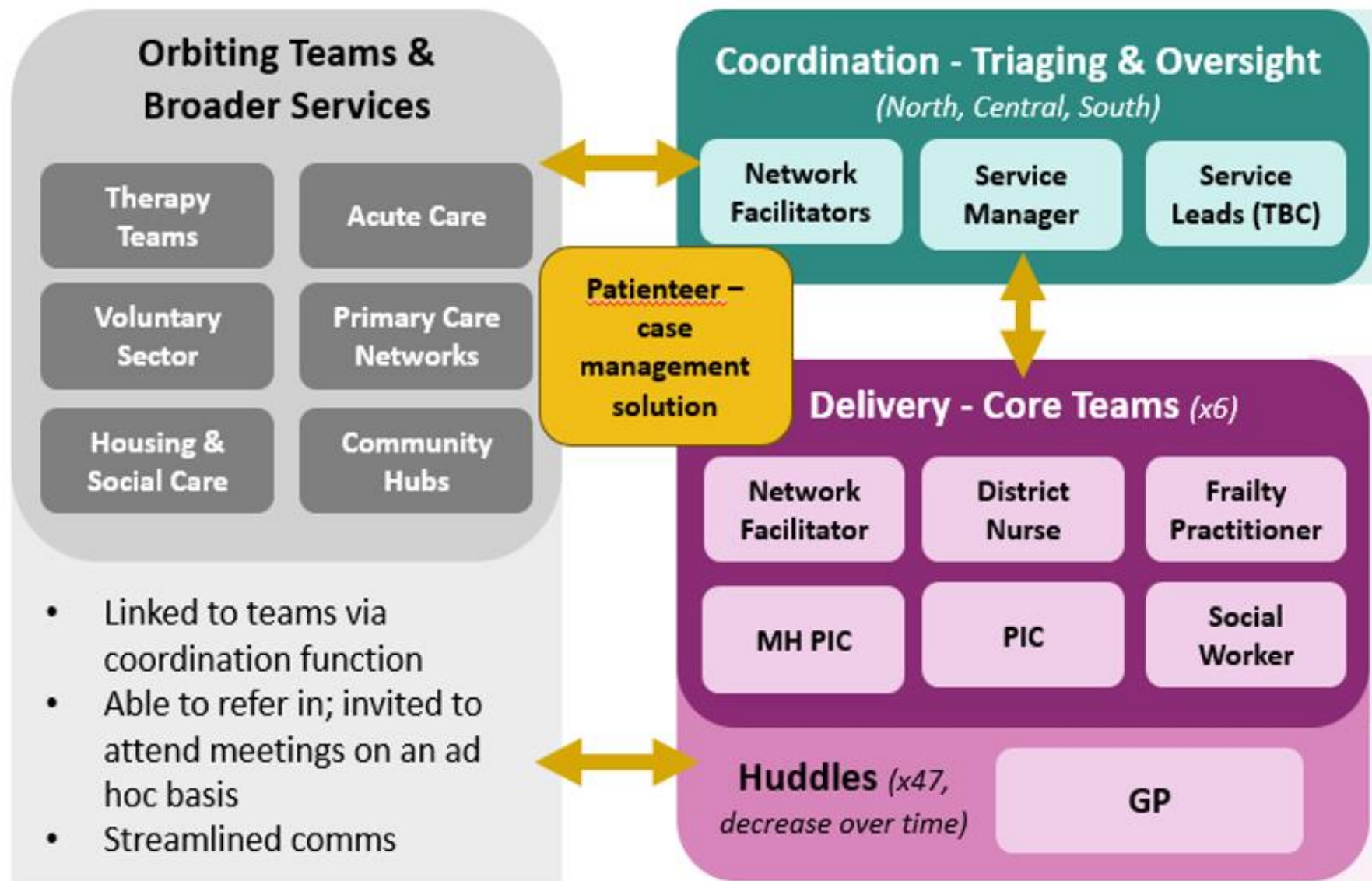


Provider Selection Regime

- A flexible and proportionate approach to selecting healthcare providers that reflect needs of the population
- Greater capability for integrating and collaborating
- Greater transparency
- Reduces bureaucracy and costs associated with tendering
- Competition is one option, others are most suitable provider and direct award



Integration in practice – Integrated Neighbourhood Teams



Measuring Impact – Nationally and Locally

NHS Outcomes Framework

1. Preventing people from dying prematurely
2. Quality of life for Long Term Conditions
3. Helping people recover
4. People's experience of care
5. Safe environment

Adult Social Care Outcomes

1. Quality of life
2. Independence
3. Empowerment – information and advice
4. Safety
5. Social Connections
6. Continuity and quality of care

Place Shared Outcomes

- Discharge delays
- Reablement Packages
- Re-admissions to hospital
- Childhood obesity
- Education attainment
- People with MH in employment
- Resources allocated to prevention

bringing health and social care system together deliver on a common purpose



Measuring Maturity



Potential Integration Metrics

- **Population demographics** – how do the specific challenges each ICS faces impact their ability to integrate?
- **Legal integration** – do systems go beyond minimum requirements of ICSs?
- **Integration of data systems** – is data shared across organisations?
- **Financial integration** – to what extent are pooled budgets used?
- **Historical integration** – have local systems participated in previous integration initiatives?
- **Integration of workforce and services** – have systems created specialist roles and cross organisational teams?
- **Cultural integration** – measures of commitment to integration and collaborative working?
- **Geographical integration** – are organisations co-located and are boundaries co-terminus?



Conclusion

Integrated Care Systems build on over 10 years of testing and evolving integrated approaches.

We have a robust national framework that is flexible - allowing ICS to deliver integration in a way that is best for their population.

Joining up budgets can be a key enabler in integrating care.

Places are implementing Integrated Neighbourhood Teams – a critical and proactive model of care.

Feedback from Systems:

- System leaders and the workforce are enthused
- The majority agree that partners are working collaboratively
- Most are confident that they can improve population health

Department Actions to support delivery

- Enhance use of Section 75 pooled budgets
- Major Conditions Strategy
- Spread learning and best practice through model hospital, get it right first time and peer support
- Priorities for delivery – transfer of care hubs, and implement Integrated neighbourhood teams
- Federated Data Platform

